





INTERNATIONAL PROGRAMS  
**Office of International  
 Students and Scholars**  
 120 International Center  
 Iowa City, Iowa 52242-1802  
 319-335-0335 Fax 319-335-2021

Students and scholars from other countries are an important component of The University of Iowa, and contribute significantly to teaching, research, and other scholarly activities throughout UI. This is the first of what is planned to be annual reports on the international students and scholars who are members of The University of Iowa community. This statistical analysis of this population is but one way to document the impact of this component of international education and demonstrate the global reach of The University of Iowa.

While this report has been compiled by the Office of International Students and Scholars, many other offices have provided us with data that is included in the publication. Particularly, the Office of the Registrar, the Immigration Services unit of Human Resources and the Office of Admissions have contributed significant pieces of information, and we thank them for their efforts and support.

The University of Iowa, like all higher education institutions in the United States, faces many challenges in continuing to attract the best and brightest of the world to our classrooms and laboratories. The impact of tightening immigration rules and negative attitudes towards the U.S. has resulted in fewer students and scholars applying to our institution. Hopefully, recent events which have begun to ease the visa process and welcome students for their contributions will turn around this trend.

Questions on the information included in this report, or suggestions on ways to improve future editions, can be addressed to Scott King, Director, Office of International Students & Scholars at 319-335-0335 or [scott-king@uiowa.edu](mailto:scott-king@uiowa.edu).

**Scott E. King**  
 Director, Office of International Students and Scholars

## Contents

Demographics of UI’s International Student Population, Fall 2005 .....	2
Statistics on International Students by College of Major .....	5
Statistics on International Students by Region of Nationality .....	12
Historical Data on International Students at The University of Iowa .....	16
International Enrollments at Other Selected Institutions .....	18
Demographics of UI’s International Scholar Population .....	20
Explanation of Terms Used in This Profile .....	22

Unless otherwise noted, statistics define “international student” as reported for the national “Open Doors” census conducted by the Institute of International Education. While the Open Doors definition has gone through minor changes over the years, use of the Open Doors definition allows us to compare statistics for The University of Iowa with those of other institutions and with national trends.

Readers should note that the reports prepared by the Office of the Registrar for the Iowa Board of Regents enumerates international students according to a different, Board of Regents approved, definition.

# THE UNIVERSITY OF IOWA INTERNATIONAL STUDENT POPULATION: FALL 2005

## International Student Census

	Fall 2004	Fall 2005
Undergraduate	351	340
Graduate	1,496	1,426
Professional	326	329
<i>Total Enrolled</i>	<i>2,173</i>	<i>2,095</i>
Practical Training	200	190
<i>Open Doors Census Total</i>	<i>2,373</i>	<i>2,285</i>

### Who is an "International Student?"

An international student is defined as an individual enrolled at The University of Iowa who has self-identified as being neither a U.S. citizen nor permanent resident. Included are students who are here in an educational immigration status (such as F-1 and J-1) as well as those who hold other immigration statuses unrelated to study, such as temporary workers.

For national reporting purposes, students who have graduated and are in an immigration-approved "practical training" period are also included in the University's count of international students. Unless otherwise noted, all statistics in this report are based upon this definition of "international student."

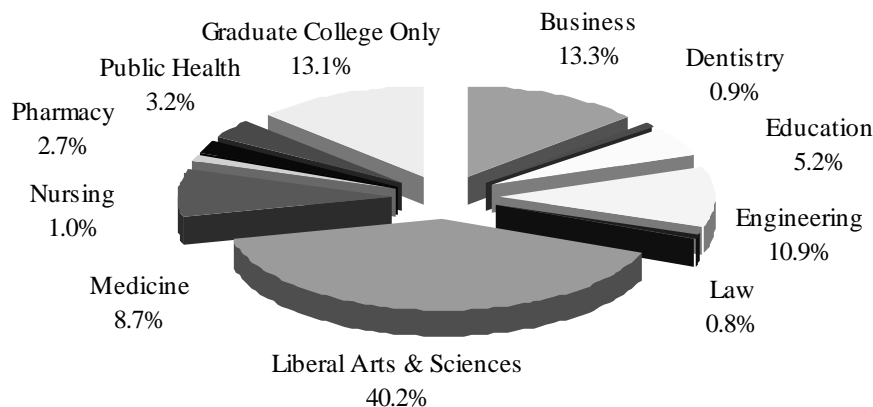
## New International Students

	Fall 2004	Fall 2005
Undergraduate	100	99
Graduate & Professional	291	285
<i>Total</i>	<i>391</i>	<i>384</i>

The total international student enrollment of The University of Iowa in fall 2005 declined for the first time since 1998, with 3.7% fewer students than enrolled in the fall 2004 semester.

Declining international student applications and enrollments have been a national trend since 2003, with 3.6% fewer international students enrolled fall 2004 than two years earlier.

## Distribution of International Students by College of Major



## Undergraduate International Students by College of Major

Business .....	10.3%
Engineering .....	10.0%
Liberal Arts & Sciences .....	77.6%
Medicine .....	0.6%
Nursing.....	1.5%

## Graduate and Professional Students by College of Major

Business .....	12.9%
Dentistry.....	1.1%
Education .....	6.3%
Engineering .....	10.5%
Law .....	0.7%
Liberal Arts & Sciences .....	33.2%
Medicine .....	11.1%
Nursing.....	0.8%
Pharmacy .....	3.0%
Public Health.....	3.6%
Graduate College Only.....	16.8%

## Most Common Majors

### Undergraduate

Pre-business (39 students)  
Accounting (14)  
International Studies (12)  
Psychology (10)  
Finance (10)

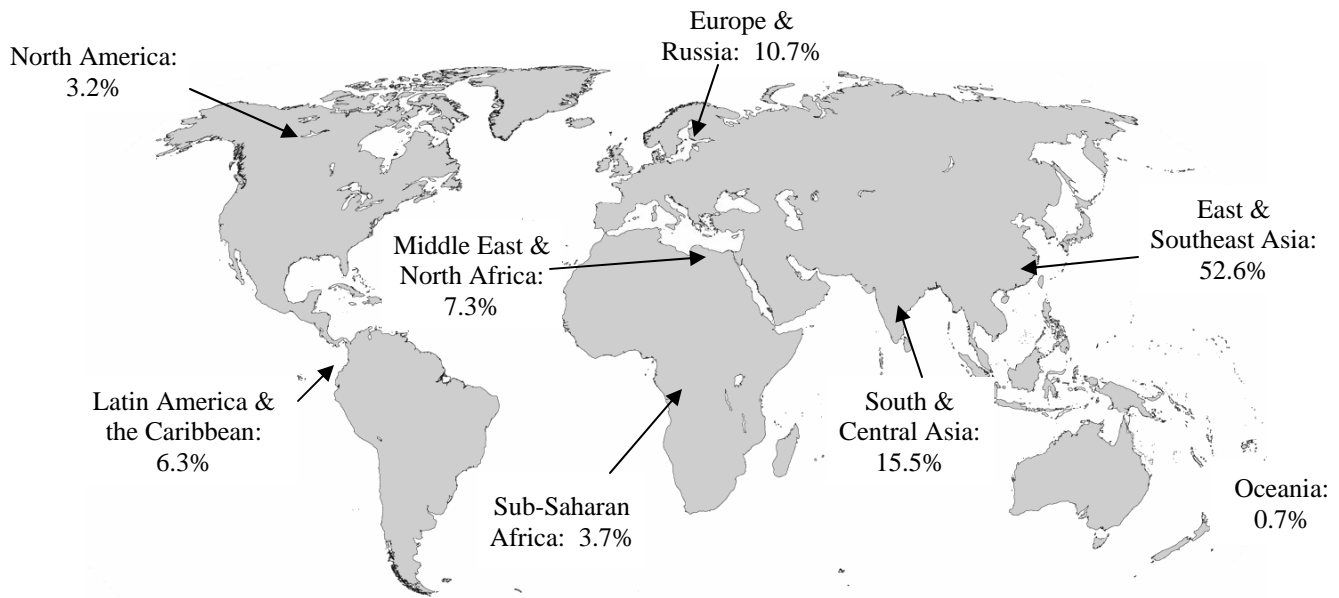
### Graduate & Professional

MBA Programs (163 students)  
Chemistry (66)  
Civil & Environmental Engineering (50)  
Actuarial Science (47)  
Pharmacy (Ph.D) (47)

## Degree Status of Undergraduate International Students

Degree Programs.....	77.6%
Intensive English Study .....	13.8%
Non-degree Visiting Students ...	8.5%

## UI International Students by World Region of Origin Fall 2005



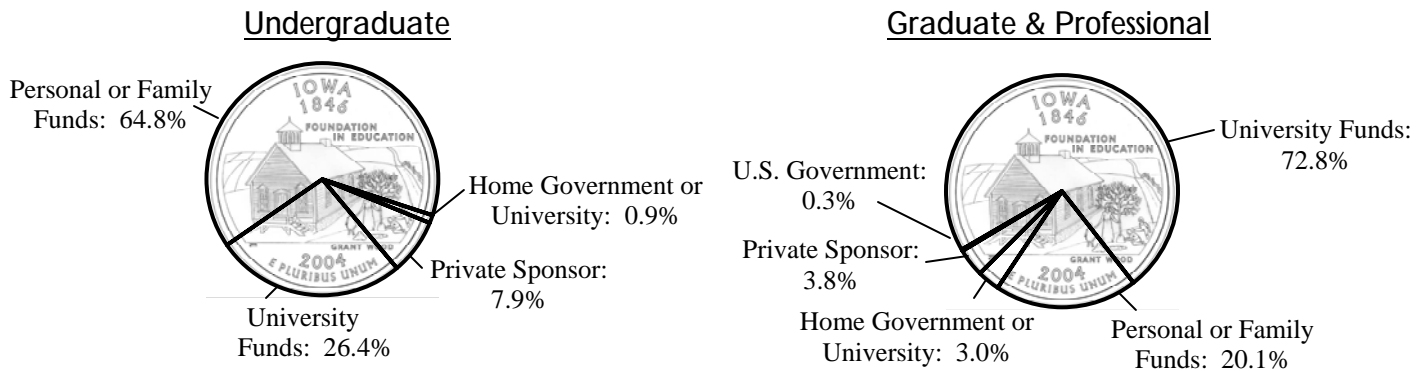
### Countries and Territories Represented in International Student Population

Albania..... 1	El Salvador..... 2	Lithuania..... 3	Sweden .....6
Algeria..... 1	Estonia ..... 1	Malaysia..... 20	Syria.....5
Argentina..... 13	Ethiopia..... 1	Mali..... 1	Taiwan .....118
Armenia..... 4	Finland ..... 3	Mexico ..... 16	Tanzania .....1
Australia ..... 13	France..... 15	Morocco ..... 1	Thailand..... 17
Austria..... 3	Gabon..... 1	Myanmar..... 1	Trinidad and Tobago .....2
Azerbaijan ..... 4	Gambia..... 1	Nepal..... 6	Turkey .....63
Bahamas ..... 3	Germany..... 39	Netherlands ..... 6	Ukraine ..... 13
Bangladesh ..... 3	Ghana ..... 11	New Zealand..... 2	United Arab Emirates .....2
Barbados..... 1	Greece ..... 4	Nigeria ..... 12	United Kingdom ..... 12
Belize ..... 3	Guatemala ..... 2	Norway ..... 2	Uruguay .....2
Bosnia-Herzegovina ..... 1	Hungary ..... 5	Pakistan..... 15	Uzbekistan .....3
Brazil..... 32	Iceland..... 5	Panama..... 1	Venezuela ..... 12
Bulgaria..... 6	India ..... 325	Paraguay ..... 1	Vietnam .....7
Burkina Faso ..... 4	Indonesia ..... 15	Peru ..... 10	Zambia.....1
Cameroon ..... 1	Iran ..... 5	Philippines ..... 8	
Canada..... 71	Iraq ..... 4	Poland ..... 11	
Chile ..... 13	Ireland ..... 5	Romania..... 32	
China (Hong Kong)..... 29	Israel..... 12	Russia..... 25	
China (PRC)..... 591	Italy ..... 5	Saudi Arabia ..... 1	
Colombia ..... 15	Ivory Coast..... 2	Senegal..... 1	
Congo, Dem. Rep. of..... 5	Jamaica..... 10	Serbia and Montenegro.. 4	
Costa Rica ..... 3	Japan ..... 87	Singapore ..... 4	
Croatia ..... 10	Jordan..... 31	Slovakia ..... 3	
Cuba ..... 1	Kenya ..... 19	Slovenia ..... 2	
Czech Republic ..... 2	Korea, South ..... 305	South Africa..... 3	
Dahomey ..... 1	Kuwait..... 3	Spain ..... 12	
Denmark ..... 2	Latvia ..... 1	Sri Lanka..... 3	
Dominican Republic..... 1	Lebanon ..... 24	St. Christopher-Nevis.... 1	
Ecuador ..... 1	Liberia..... 2	St. Vincent ..... 1	
Egypt ..... 12	Libya ..... 2	Sudan ..... 8	

### Largest National Representations

- China (PRC) (591 students)
- India (325)
- South Korea (305)
- Taiwan (118)
- Japan (87)
- Canada (71)
- Turkey (63)
- Germany (39)
- Brazil (32)
- Romania (32)

# Primary Source of Funds for Study and Living Expenses (F-1 and J-1 Students)



The above data indicate the primary source of support for students' educational and living expenses. Only students in F-1 or J-1 status are included in this determination. About 3% of graduate and professional students, who are accompanied by dependents, receive significant support from the University such as a graduate assistantship yet are listed as having another source of support, generally personal or family, as their primary source as the assistantship covers less than 50% of their total anticipated expenses.

## What It Costs an International Student to Attend UI

The annual 2-semester budget for an undergraduate international student (paying out-of-state fees) is nearly \$27,000. The estimate for a graduate student paying out-of-state tuition is approximately \$27,100, while a student who qualifies for in-state rates (i.e., a graduate assistant) has a budget of \$15,700. Professional program estimates vary widely, with MBA budgets of \$33,600 (out-of-state) and \$23,000 (in-state) and College of Law costs of \$42,600 (out-of-state) and \$27,300 (in-state).

Estimates include two semester's tuition and books and 12 months of typical living and personal expenses.

## The Economic Impact of UI's International Student Population

NAFSA: Association of International Educators compiles annual statistics on the economic impact of international students, taking into account typical levels of US support, dependents present in the US, and other factors that influence spending of international students. According to this estimate, international students at The University of Iowa contribute nearly **\$42,300,000** per year to the local economy.

## Personal and Immigration Data

### Immigration Status

- F-1 (student): 69.9%
- J-1 (exchange visitor): 14.8%
- Employment immigration status: 4.9%
- Dependent immigration status: 1.9%
- Other: 8.5%

### Gender

- Female: 44.9%
- Male: 55.1%

### Age

- 17 and under: 1.0%
- 18-22: 10.8%
- 23-30: 50.1%
- 31-40: 33.8%
- 41-50: 3.8%
- 51+: 0.6%

## Dependents of International Students

485 dependents in derivative immigration status (F-2 or J-2) accompany 348 international students at The University of Iowa. The tally of 313 spouses and 172 dependent children does not include the many married couples who are both students, the numerous U.S. born children of international students who derive U.S. citizenship from their birth, or the increasing number of unmarried partners and parents who are a part of international student households (the latter two categories enter the U.S. as visitors as U.S. immigration law does not accord them dependent immigration status).

All but one student who has accompanying dependents is studying at the graduate or professional level.

### Ages of dependent children

- 5 and under: 27.3%
- 6-10: 33.1%
- 11-15: 28.5%
- 16-20: 11.1%
- Average age: 9

### Gender of students with accompanying dependent spouses

- Male: 77.1%
- Female: 22.9%

# STATISTICS ON INTERNATIONAL STUDENTS BY COLLEGE OF MAJOR

## Tippie College of Business

International Student Population: 303

**Undergraduate Students: 35**

(2.3% of total undergraduates in college)

**Graduate Students: 63**

(40.1% of total graduate students in college)

**Professional (MBA) Students: 163**

(17.1% of total professional students in college)

**Students in Post-Completion Practical Training: 42**

### Most Common Majors

#### Undergraduate

Accounting (14 students)

Finance (10)

#### Graduate

Economics (26 students)

Management Sciences (13)

#### Professional

Off-Campus MBA Programs (104 students)

On-Campus MBA Program (59)

### Countries/Territories Represented in the College International Student Population

Argentina..... 1	France..... 2	Latvia..... 1	Russia .....2
Azerbaijan ..... 2	Germany..... 6	Malaysia..... 2	Sri Lanka .....1
Brazil..... 2	Ghana..... 2	Nepal..... 1	Taiwan .....21
Bulgaria..... 4	India ..... 39	Netherlands ..... 1	Thailand.....1
Canada..... 11	Indonesia..... 7	Pakistan..... 3	Turkey .....6
China (Hong Kong)..... 16	Ireland..... 1	Paraguay ..... 1	Ukraine .....4
China (PRC)..... 106	Japan ..... 5	Peru..... 3	Uruguay .....1
Colombia..... 1	Jordan..... 1	Philippines ..... 1	Vietnam .....1
Congo, Dem. Rep. of..... 1	Kenya..... 2	Poland..... 1	
Cuba ..... 1	Korea, South ..... 33	Romania..... 9	<i>38 countries and territories</i>

### Distribution of Students by World Region

East & Southeast Asia: 63.7%

South & Central Asia; 14.5%

Europe & Russia: 10.9%

North America: 3.6%

Latin America & the Caribbean: 3.3%

Middle East & North Africa: 2.3%

Sub-Saharan Africa: 1.7%

### Immigration Status

F-1: 59.4%/J-1: 3.6%

Employment Status: 9.2%/Other: 27.8%

### Gender

35.6% female

64.4% male

### Largest National Representations

China (PRC) (106 students)

India (39)

South Korea (33)

Taiwan (21)

China (Hong Kong) (16)

### University Funded Students

(F-1 and J-1 Status Only)

Undergraduate: 15.6%

Graduate & Professional: 61.9%

## College of Dentistry

International Student Population: 21

Graduate Students: 17  
(36.2% of total graduate students in college)  
Professional (DDS) Students: 3  
(0.9% of total professional students in college)

Students in Post-Completion Practical Training: 1

### Most Common Graduate Majors

Oral Science (8 students)  
Operative Dentistry (5)

### Countries/Territories Represented in the College International Student Population

Argentina..... 1	Mexico ..... 1
Barbados..... 1	Nigeria ..... 1
Canada..... 1	Pakistan..... 1
Colombia..... 1	Spain ..... 1
Denmark..... 1	Taiwan ..... 1
Guatemala ..... 1	Thailand ..... 5
India ..... 2	Zimbabwe..... 1
Jordan ..... 1	
Korea, South..... 1	<i>16 countries and territories</i>

### Distribution of Students by World Region

East & Southeast Asia: 33.3%  
Latin America & the Caribbean: 23.8%  
South & Central Asia; 14.3%  
Sub-Saharan Africa: 9.5%  
Europe & Russia: 9.5%  
North America: 4.8%  
Middle East & North Africa: 4.8%

### Immigration Status

F-1: 76.2%/J-1: 14.3%/Other: 9.5%

### Gender

57.1% female/42.9% male

### University Funded Students

(F-1 and J-1 Status Only)  
Graduate & Professional: 15.7%

## College of Education

International Student Population: 119

Undergraduate Students: 1  
(0.2% of total undergraduate students in college)  
Graduate Students: 111  
(17.8% of total graduate students in college)

Students in Post-Completion Practical Training: 7

### Most Common Majors

Psychological and Quantitative Foundations (44 students)  
Secondary Education (27)  
Science Education (12)

### Countries/Territories Represented in the College International Student Population

Armenia..... 1	Kenya ..... 4
Belize ..... 2	Korea, South ..... 27
Brazil ..... 1	Malaysia ..... 2
Canada ..... 1	Russia..... 1
China (PRC) ..... 19	Singapore ..... 1
Egypt ..... 1	Spain ..... 3
Germany ..... 3	Sudan ..... 1
Ghana..... 3	Taiwan ..... 17
China (Hong Kong)..... 1	Thailand..... 2
India..... 11	Turkey ..... 7
Indonesia ..... 3	Venezuela ..... 1
Jamaica..... 1	
Japan..... 3	<i>25 countries and territories</i>
Jordan..... 2	

### Distribution of Students by World Region

East & Southeast Asia: 63.6%  
South & Central Asia; 9.3%  
Middle East & North Africa: 8.5%  
Sub-Saharan Africa: 6.8%  
Europe & Russia: 6.8%  
Latin America & the Caribbean: 4.2%  
North America: 0.8%

### Largest National Representations

South Korea (27 students)  
China (PRC) (19)  
Taiwan (17)

### Immigration Status

F-1: 78.8%/J-1: 16.1%/Other: 5.1%

### Gender

74.6% female/25.4% male

### University Funded Students

(F-1 and J-1 Status Only)  
Graduate: 38.1%

# College of Engineering

## International Student Population: 250

**Undergraduate Students: 34**  
(2.8% of total undergraduate students in college)

**Graduate Students: 184**  
(48.7% of total graduate students in college)

**Students in Post-Completion Practical Training: 32**

**Most Common Majors**  
Undergraduate  
Biomedical Engineering (9 students)

Graduate  
Civil & Environmental Engineering (50 students)  
Mechanical Engineering (42)

### Countries/Territories Represented in College International Student Population

Argentina..... 1	Ghana ..... 2	Jordan..... 3	Romania.....3
Australia ..... 2	Greece ..... 1	Korea, South ..... 39	Sudan .....1
Bangladesh ..... 1	Iceland..... 1	Kuwait ..... 2	Taiwan .....5
Brazil..... 2	India ..... 45	Malaysia..... 4	Turkey .....11
Canada..... 3	Indonesia..... 1	Mexico ..... 1	Venezuela .....4
Chile..... 1	Iran ..... 3	Nepal..... 2	
China (PRC)..... 93	Iraq ..... 1	Netherlands ..... 1	<i>35 countries and territories</i>
Congo, Dem. Rep. of..... 1	Ireland ..... 1	Nigeria ..... 2	
Egypt ..... 2	Italy ..... 2	Panama..... 1	
Germany..... 1	Japan ..... 5	Poland ..... 2	

### Distribution of Students by World Region

- East & Southeast Asia: 58.8%
- South & Central Asia; 19.2%
- Middle East & North Africa: 8.8%
- Europe & Russia: 4.8%
- Latin America & the Caribbean: 4.0%
- Sub-Saharan Africa: 2.4%
- North America: 1.2%
- Oceania: 0.8%

### Largest National Representations

- China (PRC) (93 students)
- India (45)
- South Korea (39)

### Immigration Status

- F-1: 88.8%/J-1: 6.8%
- Other: 4.4%

### Gender

- 21.6% female
- 78.4% male

### University Funded Students

- (F-1 and J-1 Status Only)
- Undergraduate: 44.0%
- Graduate: 81.3%

# College of Law

International Student Population: 19

**Professional (JD, LL.M) Students: 12**  
(1.8% of total professional students in college)

**Academic Programs**  
LL.M: 68.4%/JD: 31.6%

**Students in Post-Completion Practical Training: 7**

### Countries/Territories Represented in College International Student Population

Armenia..... 1	Korea, South..... 2
Canada ..... 1	Pakistan..... 1
China (PRC)..... 8	Taiwan ..... 1
Dominican Republic ..... 1	Turkey ..... 1
Germany..... 1	
India ..... 2	<i>10 countries and territories</i>

### Distribution of Students by World Region

- East & Southeast Asia: 57.9%
- South & Central Asia; 15.8%
- Europe & Russia: 10.5%
- Latin America & the Caribbean: 5.3%
- Middle East & North Africa 5.3%
- North America: 5.3%

### Immigration Status

- F-1: 78.9%/J-1: 21.1%

### Gender

- 57.9% female/42.1% male



# College of Liberal Arts & Sciences

International Student Population: 894

**Undergraduate Students: 263**

(1.6% of total undergraduate students in college)

**Graduate Students: 558**

(23.5% of total graduate students in college)

**Students in Post-Completion Practical Training: 73**

## Most Common Majors

<u>Undergraduate</u>	<u>Graduate</u>
Pre-business (39 students)	Chemistry (66 students)
International Studies (12 students)	Actuarial Science (47)
Psychology (10 students)	Computer Science (45)
	Statistics (37)
	Physics (32)

## Countries/Territories Represented in College International Student Population

Algeria..... 1	Egypt..... 4	Liberia..... 2	Sri Lanka .....2
Argentina..... 5	Ethiopia..... 1	Libya..... 1	St. Christopher-Nevis .....1
Armenia..... 2	Finland ..... 1	Lithuania..... 3	St. Vincent.....1
Australia..... 7	France..... 5	Malaysia..... 8	Sudan .....6
Austria..... 1	Germany..... 11	Mali..... 1	Sweden .....2
Azerbaijan ..... 1	Ghana..... 2	Mexico ..... 7	Taiwan .....57
Bahamas ..... 1	Greece ..... 2	Morocco..... 1	Tanzania .....1
Bangladesh ..... 1	Hungary ..... 2	Netherlands ..... 3	Thailand.....1
Belize ..... 1	Iceland..... 3	New Zealand..... 2	Trinidad and Tobago .....1
Brazil..... 16	India ..... 92	Nigeria ..... 5	Turkey .....25
Bulgaria..... 2	Indonesia..... 4	Norway ..... 1	Ukraine .....2
Burkina Faso ..... 3	Iran ..... 1	Pakistan..... 2	United Arab Emirates .....2
Canada..... 38	Iraq..... 1	Peru..... 5	United Kingdom .....8
Chile ..... 9	Ireland..... 2	Philippines ..... 4	Uruguay .....1
China (Hong Kong)..... 11	Israel..... 6	Poland ..... 2	Uzbekistan .....2
China (PRC)..... 221	Italy ..... 2	Romania..... 11	Venezuela .....5
Colombia..... 11	Ivory Coast..... 2	Russia..... 11	Vietnam .....6
Congo, Dem. Rep. of..... 3	Jamaica..... 6	Senegal..... 1	Zimbabwe.....6
Costa Rica ..... 3	Japan ..... 50	Serbia and Montenegro.. 2	
Croatia ..... 8	Jordan..... 4	Singapore..... 3	
Czech Republic ..... 2	Kenya..... 10	Slovak Republic..... 2	
Dahomey ..... 1	Korea, South ..... 141	South Africa..... 3	
Denmark..... 1	Lebanon ..... 4	Spain ..... 5	

*87 countries and territories*

## Distribution of Students by World Region

East & Southeast Asia: 55.1%
South & Central Asia; 10.8%
Europe & Russia: 10.2%
Latin America & the Caribbean: 7.8%
Middle East & North Africa: 5.7%
Sub-Saharan Africa: 5.2%
North America: 4.2%
Oceania: 1.0%

## Largest National Representations

China (PRC) (221 students)
South Korea (141)
India (92)
Taiwan (57)
Japan (50)

## Immigration Status

F-1: 86.2%/J-1: 4.7%
Other: 9.1%

## Gender

51.8% female
48.2% male

## University Funded Students

(F-1 and J-1 Status Only)
Undergraduate: 20.1%
Graduate: 77.6%

# Carver College of Medicine

International Student Population: 216

**Undergraduate Students: 1**

(1.9% of total undergraduate students in college)

**Graduate Students: 68**

(20.7% of total graduate students in college)

**Professional (MD, Residents, Fellows) Students: 145**

(9.3% of total professional students in college)

**Students in Post-Completion Practical Training: 2**

## Most Common Graduate Majors

Physical Therapy & Rehabilitation Science (14 students)

Biochemistry (13)

Free Radical and Radiation Biology (13)

## Countries/Territories Represented in College International Student Population

Argentina..... 2	Guatemala..... 1	Lebanon..... 14	Saudi Arabia..... 1
Australia..... 1	China (Hong Kong)..... 1	Libya..... 1	Spain..... 1
Austria..... 1	Hungary..... 1	Malaysia..... 1	Syria..... 4
Brazil..... 2	India..... 49	Myanmar..... 1	Taiwan..... 3
Canada..... 7	Ireland..... 1	Nepal..... 2	Thailand..... 2
Chile..... 1	Israel..... 6	Norway..... 1	Turkey..... 5
China (PRC)..... 20	Jamaica..... 1	Pakistan..... 5	Ukraine..... 3
Ecuador..... 1	Japan..... 6	Philippines..... 2	Uzbekistan..... 1
Egypt..... 4	Jordan..... 13	Poland..... 2	Venezuela..... 2
Germany..... 4	Korea, South..... 18	Romania..... 2	
Greece..... 1	Kuwait..... 1	Russia..... 3	<i>42 countries and territories</i>

## Distribution of Students by World Region

South & Central Asia: 28.8%

East & Southeast Asia: 27.3%

Middle East & North Africa: 24.2%

Europe & Russia: 10.1

Latin America & the Caribbean: 5.1%

North America: 3.5%

Sub-Saharan Africa: 0.5%

Oceania: 0.5%

## Largest National Representations

India (49 students)

China (PRC) (20)

Korea, South (18)

## Immigration Status

F-1: 24.2%/J-1: 63.1%

Other: 12.7%

## Gender

36.9% female

63.1% male

## University Funded Students

(F-1 and J-1 Status Only)

Graduate: 84.1%

# College of Nursing

International Student Population: 22

**Undergraduate Students: 5**

(0.8% of total undergraduate students in college)

**Graduate Students: 14**

(6.0% of total graduate students in college)

**Students in Post-Completion Practical Training: 3**

## Countries/Territories Represented in College International Student Population

Bosnia & Herzegovina .. 1	Korea, South..... 9
Canada..... 1	Poland..... 1
China (PRC)..... 1	Taiwan..... 3
Iceland..... 1	Thailand..... 1
India..... 1	
Japan..... 2	<i>11 countries and territories</i>
Kenya..... 1	

## Distribution of Students by World Region

East & Southeast Asia: 72.7%

Europe & Russia: 13.6%

Sub-Saharan Africa: 4.5%

North America: 4.5%

South & Central Asia: 4.5%

## Immigration Status

F-1: 77.3%/J-1: 4.5%/

Other: 18.2%

## University Funded Students

(F-1 and J-1 Status Only)

Graduate & Professional:

23.1%

## Gender

100% female

## College of Pharmacy

International Student Population: 62

Graduate Students: 47

(64.4% of total graduate students in college)

Professional (PharmD) Students: 6

(1.4% of total professional students in college)

Students in Post-Completion Practical Training: 9

### Countries/Territories Represented in College International Student Population

Brazil.....	1	Nigeria.....	2
Cameroon.....	1	Peru.....	1
China (PRC).....	17	Russia.....	1
Colombia.....	1	Syria.....	1
Ghana.....	1	Taiwan.....	5
India.....	16	Thailand.....	3
Jordan.....	5	Turkey.....	1
Korea, South.....	2		
Malaysia.....	2		
Mexico.....	2		

*17 countries and territories*

### Distribution of Students by World Region

East & Southeast Asia: 46.8%

South & Central Asia: 25.8%

Middle East & North Africa: 11.3%

Latin America & the Caribbean: 8.1%

Sub-Saharan Africa: 6.5%

Europe & Russia: 1.6%

### Largest National Representations

China (PRC) (17 students)

India (16)

### Immigration Status

F-1: 91.9%/J-1: 4.8%/Other: 3.2%

### Gender

46.8% female/53.2% male

### University Funded Students

(F-1 and J-1 Status Only)

Graduate & Professional: 68.0%

## College of Public Health

International Student Population: 73

Graduate Students: 64

(23.1% of total graduate students in college)

Students in Post-Completion Practical Training: 9

### Most Common Majors

Biostatistics (29 students)

Master of Public Health Program (17)

### Countries/Territories Represented in College International Student Population

Argentina.....	1	Pakistan.....	1
Australia.....	1	Poland.....	1
Bahamas.....	1	Romania.....	1
China (PRC).....	24	Slovakia.....	1
Gambia.....	1	Sweden.....	1
Germany.....	1	Taiwan.....	1
India.....	23	Thailand.....	1
Korea, South.....	7	Turkey.....	1
Lebanon.....	4		
Nigeria.....	2		

*18 countries and territories*

### Distribution of Students by World Region

East & Southeast Asia: 45.2%

South & Central Asia: 32.9%

Europe & Russia: 6.8%

Middle East & North Africa: 6.8%

Sub-Saharan Africa: 4.1%

Latin America & the Caribbean: 1.4%

North America: 1.4%

Oceania: 1.4%

### Largest National Representations

China (PRC) (24 students)

India (23)

### Immigration Status

F-1: 84.9%/J-1: 6.8%/Other: 8.2%

### Gender

52.1% female/47.9% male

### University Funded Students

(F-1 and J-1 Status Only)

Graduate: 63.8%

# Graduate College

International Student Population: 1,425  
(26.7% of total graduate students)

*The statistics below refer to students in Graduate College Only Programs*

**International Students Enrolled in Graduate College Only Programs: 300**  
(32.5% of total graduate students in Graduate College Only Programs)

## Countries/Territories Represented in College International Student Population

Albania .....	1	Jordan .....	2
Argentina.....	2	Kenya .....	2
Australia.....	2	Korea, South.....	26
Austria .....	1	Lebanon .....	2
Azerbaijan .....	1	Malaysia.....	1
Bahamas.....	1	Mexico.....	5
Bangladesh .....	1	Nepal .....	1
Brazil.....	8	Netherlands .....	1
Burkina Faso .....	1	Pakistan.....	2
Canada.....	8	Peru.....	1
Chile.....	2	Philippines .....	1
China (PRC).....	82	Poland.....	2
Colombia.....	1	Romania .....	6
Croatia .....	2	Russia .....	7
Egypt .....	1	Serbia and Montenegro..	2
El Salvador .....	2	Slovenia .....	2
Estonia .....	1	Spain .....	2
Finland.....	2	Sweden.....	3
France.....	8	Taiwan .....	4
Gabon.....	1	Thailand .....	1
Germany.....	12	Trinidad and Tobago.....	1
Ghana.....	1	Turkey .....	6
Hungary .....	2	Ukraine .....	4
India.....	45	United Kingdom.....	4
Iran.....	1	Zambia.....	1
Iraq.....	2	Zimbabwe.....	1
Italy.....	1		
Jamaica .....	2		
Japan .....	16		

*55 countries and territories*

## Distribution of Students by World Region

East & Southeast Asia: 43.7%  
Europe & Russia: 21.3%  
South & Central Asia: 16.3%  
Latin America & the Caribbean: 8.0%  
Middle East & North Africa: 4.7%  
North America: 3.0%  
Sub-Saharan Africa: 2.3%  
Oceania: 0.6%

## Largest National Representations

China (PRC) (82 students)  
India (45)  
Korea, South (26)

**Students in Post-Completion Practical Training: 9**

## Most Common Majors

Applied Mathematics and Computer Science (14 students)  
Neuroscience (14)

## Immigration Status

F-1: 31.7%/J-1: 35.3%  
Employment Status: 21.0%/Other: 12.0%

## Gender

38.3% female  
61.7% male

## University Funded Students

(F-1 and J-1 Status Only)  
Graduate: 73.6%

## Graduate Programs with More than 50% International Enrollment

Program	Total Students	Intl Students	% Intl
Operative Dentistry .....	5	5	100.0%
Statistics .....	41	37	90.2%
Marketing .....	7	6	85.7%
Actuarial Science .....	56	47	83.9%
Asian Civilizations .....	14	11	78.6%
Biostatistics .....	34	26	76.5%
Stomatology .....	4	3	75.0%
Management Sciences .....	18	13	72.2%
Mechanical Engineering.....	59	42	71.2%
Second Language Acquisition.....	23	16	69.6%
Free Radical & Radiation Biology .....	19	13	68.4%
Finance .....	12	8	66.7%
Statistical Genetics .....	9	6	66.7%
Economics .....	40	26	65.0%
Pharmacy.....	73	47	64.4%
Civil & Environmental Engineering..	93	50	53.8%
Physics .....	62	32	51.6%
Chemistry .....	128	66	51.6%

# STATISTICS ON INTERNATIONAL STUDENTS BY REGION OF NATIONALITY

## North America

### Countries Represented

Bahamas .....3      Canada .....71

### Distribution by College of Major

Business ..... 14.9%  
 Dentistry..... 1.4%  
 Education ..... 2.7%  
 Engineering..... 4.1%  
 Law ..... 1.4%  
 Liberal Arts & Sciences ..... 51.4%  
 Medicine ..... 8.1%  
 Nursing..... 1.4%  
 Public Health..... 1.4%  
 UIHC..... 1.4%  
 Graduate College Only Programs ..... 12.2%

### Immigration Status

F-1: 58.1%/J-1: 16.2%/Employment Status: 9.5%/Other: 16.3%

### Gender

Female: 45.9%/Male: 54.1%



Undergraduate Students .....26 (35.1%)  
 Graduate Students .....35 (47.3%)  
 Professional Students .....11 (14.9%)  
 Students in Practical Training .....2 (2.7%)  
**Total.....74**

### University Funded Students (F-1 and J-1 Status Only)

Undergraduate: 46.2%/Graduate & Professional: 54.3%

## Latin America & the Caribbean

### Countries Represented

Argentina.....13	Guatemala.....2
Barbados .....1	Jamaica ..... 10
Belize .....3	Mexico ..... 16
Brazil.....32	Panama..... 1
Chile.....13	Paraguay ..... 1
Colombia.....15	Peru .....10
Costa Rica .....3	St. Christopher-Nevis..... 1
Cuba .....1	St. Vincent ..... 1
Dominican Republic .....1	Trinidad and Tobago.....2
Ecuador .....1	Uruguay .....2
El Salvador.....2	Venezuela .....12

### Distribution by College of Major

Business ..... 7.0%  
 Dentistry..... 3.5%  
 Education ..... 3.5%  
 Engineering..... 7.0%  
 Law ..... 0.7%  
 Liberal Arts & Sciences ..... 47.6%  
 Medicine ..... 9.8%  
 Pharmacy ..... 3.5%  
 Public Health..... 0.7%  
 Graduate College Only Programs ..... 16.8%



Undergraduate Students .....23 (16.1%)  
 Graduate Students .....94 (65.7%)  
 Professional Students .....15 (10.5%)  
 Students in Practical Training .....11 (7.7%)  
**Total.....143**

### Immigration Status

F-1: 69.9%/J-1: 21.0%/Employment Status: 0.7%/Other: 8.4%

### Gender

Female: 50.3%/Male: 49.7%

### University Funded Students (F-1 and J-1 Status Only)

Undergraduate: 34.8%/Graduate & Professional: 47.7%

## Europe & Russia

### Countries Represented

Albania.....	1	Ireland.....	5
Armenia.....	4	Italy.....	5
Austria.....	3	Latvia.....	1
Azerbaijan.....	4	Lithuania.....	3
Bosnia-Herzegovina.....	1	Netherlands.....	6
Bulgaria.....	6	Norway.....	2
Croatia.....	10	Poland.....	11
Czech Republic.....	2	Romania.....	32
Denmark.....	2	Russia.....	25
Estonia.....	1	Serbia and Montenegro.....	4
Finland.....	3	Slovakia.....	3
France.....	15	Slovenia.....	2
Germany.....	39	Spain.....	12
Greece.....	4	Sweden.....	6
Hungary.....	5	Ukraine.....	13
Iceland.....	5	United Kingdom.....	12

### Distribution by College of Major

Business.....	13.4%
Dentistry.....	0.8%
Education.....	3.2%
Engineering.....	4.9%
Law.....	0.8%
Liberal Arts & Sciences.....	38.1%
Medicine.....	9.3%
Nursing.....	1.2%
Pharmacy.....	0.4%
Public Health.....	2.0%
Graduate College Only Programs.....	25.9%

## Middle East & North Africa

### Countries Represented

Algeria.....	1	Lebanon.....	24
Egypt.....	12	Morocco.....	1
Iran.....	5	Saudi Arabia.....	1
Iraq.....	4	Syria.....	5
Israel.....	12	Turkey.....	63
Jordan.....	31	United Arab Emirates.....	2
Kuwait.....	3		

### Distribution by College of Major

Business.....	4.3%
Dentistry.....	0.6%
Education.....	6.1%
Engineering.....	13.4%
Law.....	0.6%
Liberal Arts & Sciences.....	29.3%
Medicine.....	29.9%
Pharmacy.....	4.3%
Public Health.....	3.0%
Graduate College Only Programs.....	8.5%



Undergraduate Students.....	37	(15.0%)
Graduate Students.....	160	(64.8%)
Professional Students.....	33	(13.4%)
Students in Practical Training.....	17	(6.9%)
<b>Total.....</b>	<b>247</b>	

### Immigration Status

F-1: 49.8%/J-1: 34.4%/Employment Status: 4.5%/Other: 11.3%

### Gender

Female: 51.4%/Male: 48.6%

### University Funded Students

(F-1 and J-1 Status Only)

Undergraduate: 48.6%/Graduate & Professional: 51.3%



Undergraduate Students.....	20	(12.2%)
Graduate Students.....	96	(58.5%)
Professional Students.....	47	(28.7%)
Students in Practical Training.....	1	(0.6%)
<b>Total.....</b>	<b>164</b>	

### Immigration Status

F-1: 45.1%/J-1: 37.2%/Employment Status: 3.7%/Other: 14.1%

### Gender

Female: 33.5%/Male: 66.5%

### University Funded Students

(F-1 and J-1 Status Only)

Undergraduate: 0.0%/Graduate & Professional: 36.4%

## Sub-Saharan Africa

### Countries Represented

Burkina Faso .....	4	Liberia.....	2
Cameroon .....	1	Libya.....	2
Congo, Dem. Rep. of .....	5	Mali.....	1
Dahomey .....	1	Nigeria .....	12
Ethiopia.....	1	Senegal.....	1
Gabon.....	1	South Africa.....	3
Gambia.....	1	Sudan .....	8
Ghana .....	11	Tanzania.....	1
Ivory Coast.....	2	Zambia .....	1
Kenya.....	19	Zimbabwe .....	8

### Distribution by College of Major

Business .....	5.9%
Dentistry .....	2.4%
Education .....	9.4%
Engineering.....	7.1%
Liberal Arts & Sciences .....	56.5%
Medicine .....	1.2%
Nursing .....	1.2%
Pharmacy .....	4.7%
Public Health.....	3.5%
Graduate College Only Programs .....	8.2%



Undergraduate Students .....	24	(28.2%)
Graduate Students .....	46	(54.1%)
Professional Students .....	5	(5.9%)
Students in Practical Training .....	10	(11.8%)
<b>Total.....</b>	<b>85</b>	

### Immigration Status

F-1: 60.0%/J-1: 8.2%/Employment Status: 4.7%/Other: 27.1%

### Gender

Female: 41.2%/Male: 58.5%

### University Funded Students

(F-1 and J-1 Status Only)

Undergraduate: 0.0%/Graduate & Professional: 54.9%

## South & Central Asia

### Countries Represented

Bangladesh.....	3	Pakistan.....	15
India .....	325	Sri Lanka.....	3
Nepal.....	6	Uzbekistan .....	3

### Distribution by College of Major

Business .....	12.4%
Dentistry .....	0.8%
Education .....	3.1%
Engineering.....	13.5%
Law .....	0.8%
Liberal Arts & Sciences .....	27.3%
Medicine .....	16.6%
Nursing .....	0.3%
Pharmacy .....	4.5%
Public Health.....	6.8%
Graduate College Only Programs .....	13.8%



Undergraduate Students .....	18	(5.1%)
Graduate Students .....	227	(63.9%)
Professional Students .....	71	(20.0%)
Students in Practical Training .....	39	(11.0%)
<b>Total.....</b>	<b>355</b>	

### Immigration Status

F-1: 69.0%/J-1: 12.1%/Employment Status: 9.6%/Other: 9.3%

### Gender

Female: 38.3%/Male: 61.7%

### University Funded Students

(F-1 and J-1 Status Only)

Undergraduate: 5.6%/Graduate & Professional: 48.0%

## East & Southeast Asia

### Countries Represented

China (Hong Kong).....29	Myanmar.....1
China (PRC).....591	Philippines .....8
Indonesia.....15	Singapore.....4
Japan .....87	Taiwan .....118
Korea, South .....305	Thailand .....17
Malaysia.....20	Vietnam .....7

### Distribution by College of Major

Business.....	16.1%
Dentistry.....	0.6%
Education.....	6.2%
Engineering.....	12.2%
Law.....	0.9%
Liberal Arts & Sciences.....	40.8%
Medicine.....	5.4%
Nursing.....	1.3%
Pharmacy.....	2.4%
Public Health.....	2.7%
Graduate College Only Programs.....	11.3%



Undergraduate Students.....	187	(15.6%)
Graduate Students.....	761	(63.3%)
Professional Students.....	146	(12.1%)
Students in Practical Training.....	108	(9.0%)
<b>Total.....</b>	<b>1,202</b>	

### Immigration Status

F-1: 79.0%/J-1: 8.0%/Employment Status: 4.0%/Other: 9.0%

### Gender

Female: 46.3%/Male: 53.7%

### University Funded Students

(F-1 and J-1 Status Only)

Undergraduate: 7.0%/Graduate & Professional: 51.7%

## Oceania

### Countries Represented

Australia.....13	New Zealand.....2
------------------	-------------------

### Distribution by College of Major

Engineering.....	13.3%
Liberal Arts & Sciences.....	60.0%
Medicine.....	6.7%
Public Health.....	6.7%
Graduate College Only Programs.....	13.3%



Undergraduate Students.....	5	(33.3%)
Graduate Students.....	7	(46.7%)
Professional Students.....	1	(6.7%)
Students in Practical Training.....	2	(13.3%)
<b>Total.....</b>	<b>15</b>	

### Immigration Status

F-1: 80.0%/J-1: 20.0%

### Gender

Female: 66.7%/Male: 33.3%

### University Funded Students

(F-1 and J-1 Status Only)

Undergraduate: 100.0%/Graduate & Professional: 62.5%



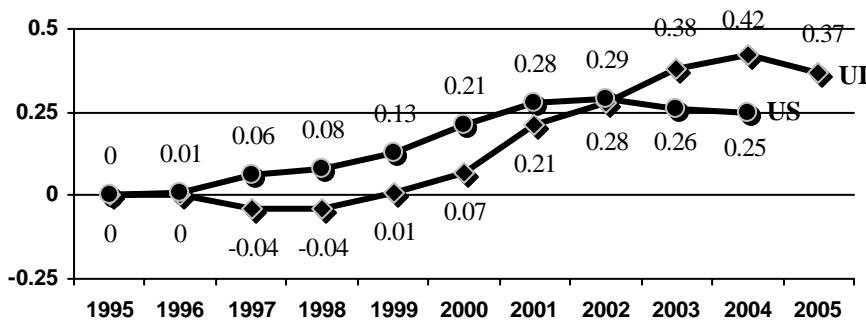
# HISTORICAL DATA ON INTERNATIONAL STUDENTS AT THE UNIVERSITY OF IOWA

## International Student Enrollments at The University of Iowa and Nationwide

The chart below gives a 10 year synopsis of international student enrollments (as reported via the Open Doors census) for The University of Iowa and all U.S. colleges and universities.

	1995	1996	1997	1998	1999	2000	2001	2002	2003	2004	2005
U of Iowa	1,673	1,669	1,612	1,602	1,697	1,792	2,027	2,142	2,307	2,373	2,285
U.S. Total	453,787	457,984	481,280	490,934	514,726	547,867	582,323	586,323	572,509	565,039	n/a

### Percentage Change in International Student Populations



The chart at right shows the percentage growth in UI and US international student populations, with 1995 as the base year. Due partly to recent national declines in international student numbers, UI has seen slightly more growth than national trends.

## Comparative International Enrollment by College of Major

### Undergraduate Students/Fall Semester

	Business	Engineering	Liberal Arts & Sciences	Other
1995	23.5%	11.1%	61.2%	4.2%
2000	14.1%	13.7%	70.6%	1.6%
2005	10.3%	10.0%	77.6%	2.1%

### Graduate and Professional Students/Fall Semester

	Business	Education	Engineering	Liberal Arts & Sciences	Medicine	Other
1995	10.7%	10.5%	14.7%	49.5%	6.8%	7.8%
2000	14.1%	6.9%	13.7%	33.6%	10.4%	21.3%
2005	12.9%	6.3%	10.5%	33.2%	11.1%	26.0%

## Most Common Majors of International Students

**1995**

Undergraduate  
Pre-business  
Economics  
Electrical Engineering

Graduate  
Computer Science  
Mechanical Engineering  
MBA Programs  
Pharmacy (Ph.D.)  
Chemistry

**2000**

Undergraduate  
Pre-business  
Computer Science  
Psychology

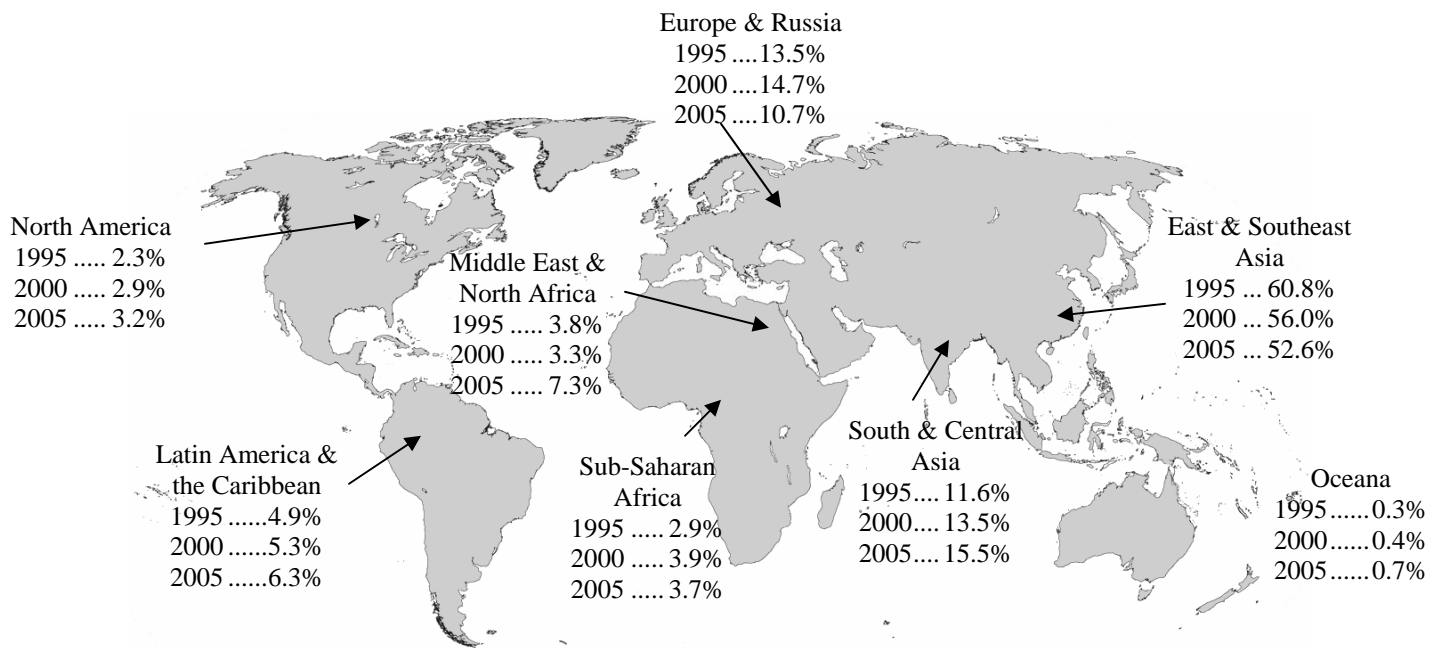
Graduate  
MBA Programs  
Pharmacy (Ph.D.)  
Mechanical Engineering  
Management Science  
Chemistry

**2005**

Undergraduate  
Pre-business  
Economics  
Electrical Engineering

Graduate  
MBA Programs  
Chemistry  
Civil & Environmental Engineering  
Actuarial Science  
Pharmacy (Ph.D.)

## UI International Students by World Region of Origin



### 10 Year Trends in UI International Student Enrollment

	1995	2000	2005
International Students as % of Total Enrollment	6.1%	6.3%	7.0%
International Students as % of All Undergraduate Students	1.9%	1.5%	1.7%
International Students as % of All Graduate Students	14.9%	16.7%	18.8%
Undergraduates as % of All International Students	22.3%	16.6%	16.2%
Women as % of All International Students	41.8%	45.1%	44.9%
New International Students, Fall Semester	431	528	384

### Largest National Representations in International Student Population

1995		2000		2005	
China.....	390	China .....	479	China.....	591
Taiwan .....	213	South Korea.....	242	India .....	325
South Korea .....	189	India.....	223	South Korea .....	305
India.....	179	Japan.....	92	Taiwan .....	118
Malaysia .....	91	Taiwan.....	81	Japan .....	87
Japan.....	77	Canada.....	50	Canada .....	71
Indonesia.....	60	Turkey .....	37	Turkey.....	63
Canada .....	37	Thailand.....	32	Germany.....	39
Hong Kong .....	36	Romania .....	29	Brazil.....	32
Germany .....	35	Malaysia .....	28	Romania .....	32
# countries .....	102	# countries.....	105	# countries.....	109

## INTERNATIONAL ENROLLMENTS AT OTHER SELECTED INSTITUTIONS

The international enrollment figures for fall 2005 in the charts below were obtained either directly from the international student office of the relevant institution or from an official report on the university website. The total enrollment figures were all obtained from official enrollment reports posted on the university website.

The current University strategic plan includes the goal of increasing our international student population to the 9% level, which would place us near the average of the public Big Ten institution.

### International Enrollment Comparisons, Fall 2005

#### UI Peer Institutions

	Undergraduate			Graduate and Professional			Total		
	International	Total	Percentage	International	Total	Percentage	International	Total	Percentage
University of Arizona	834	28,462	2.9%	1,612	8,574	18.8%	2,446	37,036	6.6%
University of California-Los Angeles	893	24,881	3.6%	1,552	10,814	14.4%	2,445	35,625	6.9%
University of Illinois-Champaign Urbana	1,451	30,453	4.8%	3,454	10,217	33.8%	4,905	40,670	12.1%
Indiana University-Bloomington	1,224	29,562	4.1%	2,068	8,396	24.6%	3,292	37,958	8.7%
University of Michigan-Ann Arbor	1,228	25,467	4.8%	3,422	14,526	23.6%	4,650	39,993	11.6%
University of Minnesota-Twin Cities	467	28,957	1.6%	3,006	16,552	18.2%	3,473	45,509	7.6%
University of North Carolina-Chapel Hill	223	16,764	1.3%	1,066	10,512	10.1%	1,289	27,276	4.7%
Ohio State University	1,202	37,411	3.2%	2,615	13,093	20.0%	3,817	50,504	7.6%
University of Texas-Austin	1,307	36,959	3.5%	3,239	12,932	25.2%	4,546	49,791	9.1%
University of Wisconsin-Madison	1,117	28,458	3.9%	2,185	11,374	19.2%	3,302	39,832	8.3%
<i>Average</i>			<i>3.4%</i>			<i>20.8%</i>			<i>8.3%</i>
<b>University of Iowa</b>	<b>340</b>	<b>20,300</b>	<b>1.7%</b>	<b>1,755</b>	<b>9,342</b>	<b>18.8%</b>	<b>2,095</b>	<b>29,642</b>	<b>7.1%</b>

## Public Big Ten Institutions

	Undergraduate			Graduate and Professional			Total		
	International	Total	Percentage	International	Total	Percentage	International	Total	Percentage
University of Illinois-Champaign Urbana	1,451	30,453	4.8%	3,454	10,217	33.8%	4,905	40,670	12.1%
Indiana University-Bloomington	1,224	29,562	4.1%	2,068	8,396	24.6%	3,292	37,958	8.7%
University of Michigan-Ann Arbor	1,228	25,467	4.8%	3,422	14,526	23.6%	4,650	39,993	11.6%
Michigan State University	1,097	34,951	3.1%	2,195	8,250	26.6%	3,292	43,201	7.6%
University of Minnesota-Twin Cities	467	28,957	1.6%	3,006	16,552	18.2%	3,473	45,509	7.6%
Ohio State University	1,202	37,411	3.2%	2,615	13,093	20.0%	3,817	50,504	7.6%
Pennsylvania State University-University Park	824	34,637	2.4%	2,262	6,072	37.3%	3,086	40,709	7.6%
Purdue University	1,894	30,747	6.2%	2,937	7,906	37.1%	4,831	38,653	12.5%
University of Wisconsin-Madison	1,117	28,458	3.9%	2,185	11,374	19.2%	3,302	39,832	8.3%
<i>Average</i>			<b>3.8%</b>			<b>26.7%</b>			<b>9.3%</b>
<b>University of Iowa</b>	<b>340</b>	<b>20,300</b>	<b>1.7%</b>	<b>1,755</b>	<b>9,342</b>	<b>18.8%</b>	<b>2,095</b>	<b>29,642</b>	<b>7.1%</b>

## Iowa Regents Institutions

	Undergraduate			Graduate and Professional			Total		
	International	Total	Percentage	International	Total	Percentage	International	Total	Percentage
University of Iowa	340	20,300	1.7%	1,755	9,342	18.8%	2,095	29,642	7.1%
Iowa State University	645	20,732	3.1%	1,463	5,009	29.2%	2,108	25,741	8.2%
University of Northern Iowa	230	10,952	2.1%	192	1,561	12.3%	422	12,513	3.4%
<i>Average</i>			<b>2.3%</b>			<b>20.1%</b>			<b>6.2%</b>

# THE UNIVERSITY OF IOWA INTERNATIONAL SCHOLAR POPULATION: 2004-2005

## International Scholar Census 2004-2005

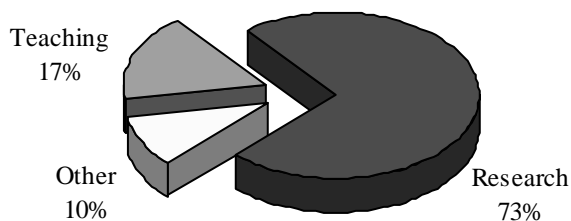
<b>Total</b>	<b>887</b>
H-1B Status	454
J-1 Status	405
O-1 Status	17
TN Status	11

The Open Doors definition of “international scholar” includes all academic professionals who are in a nonimmigrant status that pertains to their employment or other activity at UI. This population thus encompasses not only the shorter-term J-1 scholar, but also individuals in the often longer-term H-1B, O-1 and TN employment-based immigration statuses.

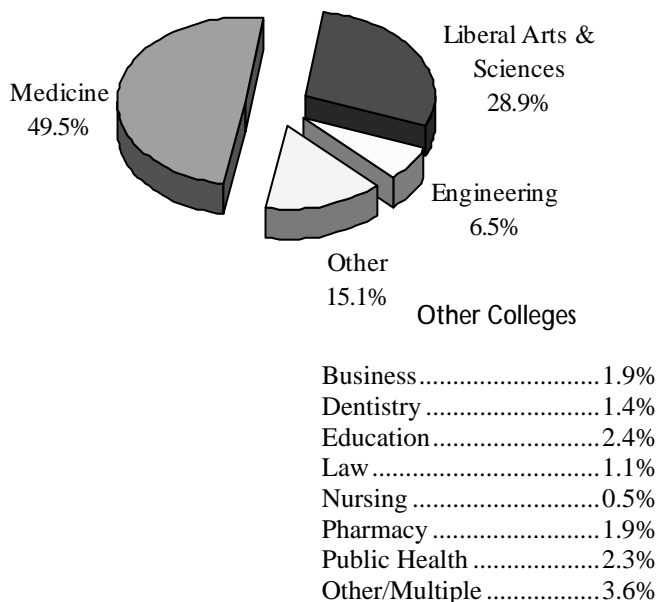
## 10 Year History of International Scholar Population

	1995-1996	1996-1997	1997-1998	1998-1999	1999-2000	2000-2001	2001-2002	2002-2003	2003-2004	2004-2005
J-1 Status	327	432	394	455	224	255	243	347	370	405
H-1B, O-1, TN Status	204	190	231	179	416	570	658	518	616	482
<b>Total</b>	<b>531</b>	<b>622</b>	<b>625</b>	<b>634</b>	<b>640</b>	<b>825</b>	<b>901</b>	<b>865</b>	<b>986</b>	<b>887</b>

### Primary Function at the University



### Distribution of International Scholars by Host College



### International Scholar Populations at Public Big Ten Institutions

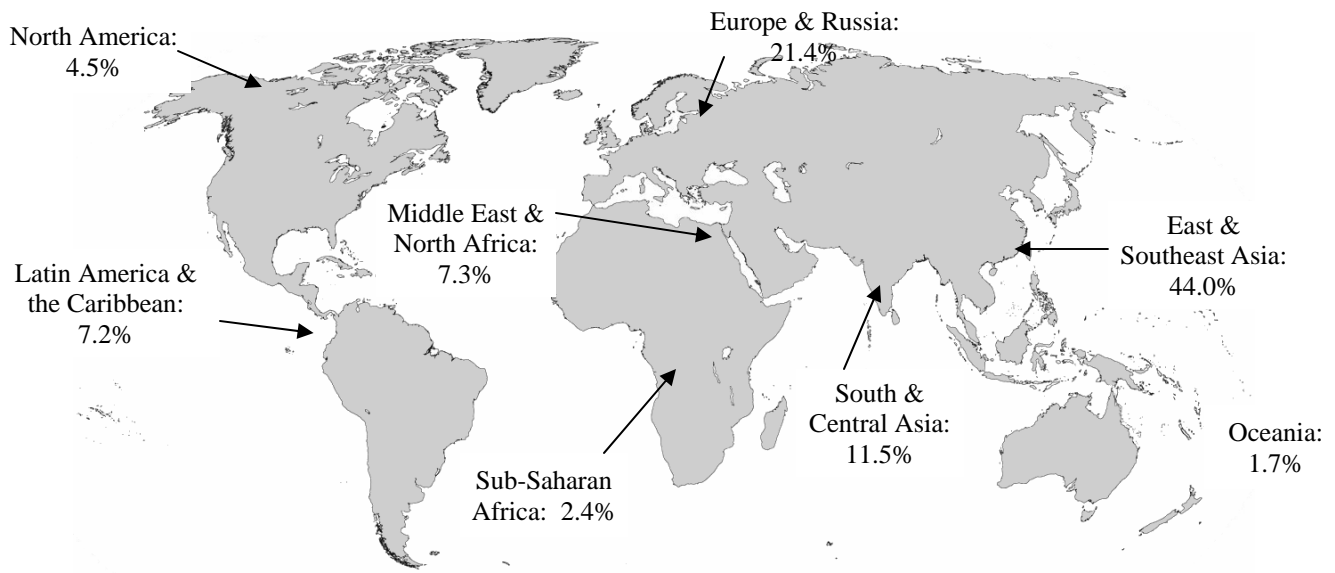
Institution	2004-05 Scholars
Ohio State University	1,570
University of Illinois	1,470
Michigan State University	1,221
University of Minnesota	1,196
University of Michigan	1,188
Pennsylvania State University	1,184
University of Wisconsin	1,011
<b>University of Iowa</b>	<b>887</b>
Purdue University	753
Indiana University	489

### Gender of Visiting Scholars

Female: 31.1%  
Male: 68.9%

# UI International Scholars by World Region of Origin

## Fall 2005



### Countries and Territories Represented in International Scholar Population

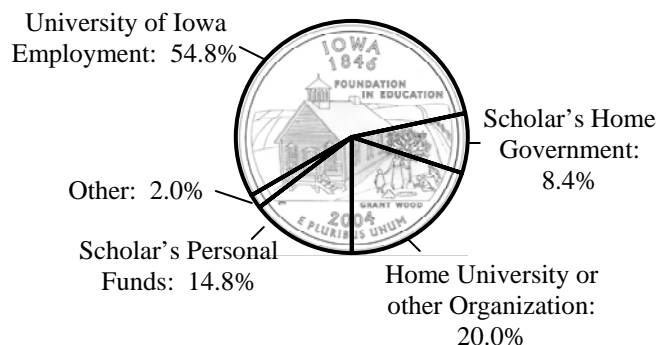
Argentina .....	12	Jamaica .....	2	Taiwan .....	10
Australia .....	14	Japan .....	77	Thailand.....	5
Austria .....	5	Jordan .....	9	Trinidad & Tobago .....	1
Azerbaijan .....	3	Korea, South .....	115	Tunisia .....	3
Bangladesh .....	4	Latvia.....	7	Turkey .....	19
Barbados .....	1	Lebanon .....	10	Uganda .....	1
Belgium .....	2	Malaysia .....	2	Ukraine.....	14
Bolivia.....	1	Mauritius .....	1	United Kingdom .....	22
Brazil.....	27	Mexico.....	11	Uzbekistan .....	1
Burma.....	1	Morocco .....	1	Venezuela .....	1
Canada.....	40	Nepal .....	1	Zimbabwe .....	2
Chile .....	5	Netherlands .....	5		
China (Hong Kong) .....	1	New Zealand .....	1		
China (Macau).....	1	Nicaragua .....	1		
China (PRC) .....	171	Nigeria .....	5		
Colombia.....	2	Norway .....	2		
Croatia .....	1	Pakistan.....	5		
Czech Republic .....	6	Philippines .....	4		
Denmark .....	2	Poland.....	11		
East Timor.....	1	Portugal.....	4		
Egypt.....	8	Romania .....	6		
Finland.....	1	Russia .....	10		
France.....	24	Rwanda .....	1		
Georgia .....	1	Saudi Arabia.....	2		
Germany .....	25	Serbia & Montenegro .....	2		
Ghana .....	6	Singapore.....	2		
Hungary .....	6	Slovakia .....	1		
Iceland.....	1	Slovenia .....	1		
India.....	91	South Africa .....	5		
Iran .....	3	Spain .....	15		
Ireland .....	1	Sri Lanka .....	1		
Israel .....	9	Switzerland .....	2		
Italy.....	9	Syria .....	1		

77 countries and territories

### Largest National Representations

China (PRC) (171 scholars)
South Korea (115)
India (91)
Japan (77)
Canada (40)
Brazil (27)
Germany (25)
France (24)
United Kingdom (22)
Turkey (19)

### Primary Source of Funding for J-1 Visiting Scholars



All H-1B, O-1 and TN scholars must be employees of the University.

# EXPLANATION OF TERMS USED IN THIS PROFILE

---

**International Student.** An international student is any individual enrolled in fall 2005 classes at The University of Iowa who has self-identified as having neither U.S. citizenship nor permanent residence. In addition to students who are here in an F-1 or J-1 educational immigration status students who hold immigration statuses unrelated to study, such as temporary workers, are included. In accordance with national data collection standards, students who have graduated and are in an immigration-approved “practical training” period are also included in the University’s count of international students.

**International Scholar.** An international scholar is an academic professional who is at the University in a J-1, H-1B, O-1 or TN immigration status. A scholar may be employed by UI, or may be here in a visiting capacity under the sponsorship of a UI academic department.

**Immigration Status.** While international students and scholars have a variety of non-immigrant statuses, the following are those which are directly related to their presence at The University of Iowa:

- F-1: student. This is the most common status for an individual who is coming to the U.S. for the purpose of study.
- J-1: exchange visitor. Exchange visitors can be students or scholars. Students in this status typically, but not exclusively, are here through a University exchange program or are receiving funding from their home government or the U.S. government. Scholars in this status may be at the University as unpaid scholars (often applicable to those who are on sabbatical at their home institution) or may be UI employees in short-term, temporary positions.
- H-1B: temporary worker. This status is obtained by the University for non-citizen employees who are in professional or technical positions, including teaching faculty. An H-1B worker is likely to be employed in a longer-term position than a J-1 exchange visitor.
- O-1: extraordinary worker. Exceptionally qualified aliens may qualify for O-1 status, which provides employment opportunities similar to H-1B status but with fewer restrictions.
- TN: Canadian and Mexican professionals in certain areas of expertise may work in this status under the North American Free Trade Agreement.

**Countries and Territories.** This report uses the U.S. State Department listing of independent countries and dependencies. The regional breakdown follows the guidelines of the “Open Doors” report published by the Institute of International Education.

## Level of Study.

- Undergraduate students are those enrolled in a program of study leading to no higher than a baccalaureate degree.
- Graduate students are those enrolled in post-baccalaureate study, with the exception of those whose programs are designated as “professional.” Masters and doctoral students are included, as well as students working on post-baccalaureate certificates and post-doctoral scholars.
- Professional students are those in the MBA, DDS, JD, LL.M, MD, and PharmD programs as well as medical residents and fellows.

**College of Study.** In accordance with official reports from the Office of the Registrar, this analysis of international students by college enumerates students in the colleges in which their programs are taught, and not which college administers their major. For example, most graduate programs are administered through the Graduate College, yet these students are counted in the college of their major. A number of highly interdisciplinary programs that cannot be placed in a single college are those included in the category of “graduate college only programs.”

The Office of International Students and Scholars is a unit of UI International Programs, which consists of a number of offices, centers, degree programs, academic programs, research projects and services. Organized under the associate provost and dean of International Programs, these units serve to further internationalize the campus and the community and promote global scholarship, research and teaching.

Dr. William Reisinger, *Associate Provost and Dean of International Programs*

Dr. Jane Desmond, *Associate Dean of International Programs*

Dr. Diana K. Davies, *Director, International Programs*

### **Office of International Students and Scholars**

Scott E. King, *Director*

Helen Jameson, *Assistant Director for Programming*

Becky Zama, *Assistant Director for Advising*

Claire Cardwell, *Adviser*

Michel Pontarelli, *Adviser*

Lee Seedorff, *Adviser*

Ann Drop, *Secretary*

Leslie Gallagher, *Secretary*

Michelle Snyder, *Secretary*